

# Racing Patagonia

---

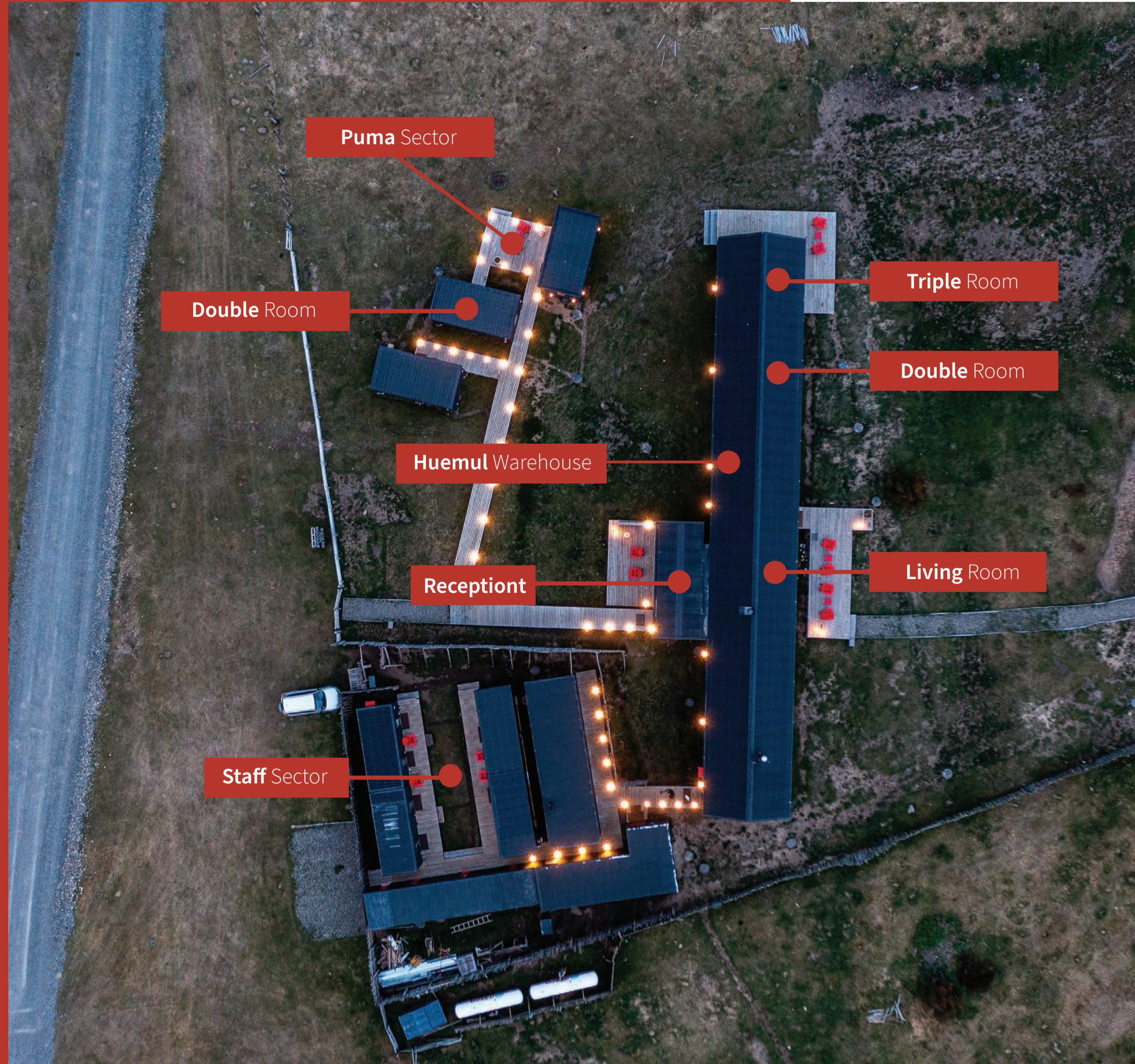


## About the Lodge

The architecture of the lodge was designed to be visually neutral, without standing out in the environment, in search of a balanced equilibrium between nature and human settlement, the estancias have defined the history of these ancestral lands.

Their symbolism led us to choose the format of a shed to represent these places, which carry an enriching historical context and immediately evoke the idiosyncrasy of Patagonia.





# Distribution Lodge

---

# B & B

Runners and companions

September to October 2024

Huemul			Puma	
Sgl	DbI	Tlp	Sgl	DbI
\$296.000	\$440.000	\$592.000	\$240.000	\$408.000
USD\$448	USD\$680	USD\$912	USD\$376	USD\$632

*\*Rates in CLP for nationals / USD for foreigners.*

*\*Rates in CLP with taxes included.*

*Huemul is located inside with an incredible view of the Paine Massif.  
\*Puma is located outside, in independent rooms with a view of Cerro Balmaceda.  
Rates per room per night, breakfast only.*

# Rates Full Board

Runners and companions

September to October 2024

Huemul			Puma	
Sgl	Dbl	Tlp	Sgl	Dbl
\$332.000	\$479.200	\$628.000	\$276.000	\$444.000
USD\$496	USD\$728	USD\$960	USD\$424	USD\$680

*\*Rates in CLP for nationals / USD for foreigners.*

*\*Rates in CLP with taxes included.*

*Huemul is located inside with an incredible view of the Paine Massif.  
\*Puma is located outside, in independent rooms with a view of Cerro Balmaceda.  
Rates per room per night, includes: breakfast, lunch or Box Lunch, and dinner.*

Huemul

# Warehouse house



Living room



Bar



Restaurant



**Superior rooms** with view of the imposing Paine Massif  
They are located inside the hotel, Galpón.

- **03 double rooms**, Italian beds which can be with 1 Queen bed or 2 single beds.

- **01 triple room**, Italian beds which can be 3 single beds or 1 Queen bed + 1 single. It is the only room that has independent access to our terrace.

Living  
Rooms



Terraza



Living/comedor



Bar



Juegos  
de Sal3n



Tienda  
de Souvenirs





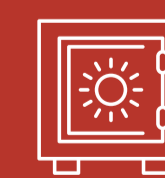
# Double Rooms



Italian Beds  
*(Option double and twin)*



Private bathroom



Safe box



Heating



# Triple Rooms

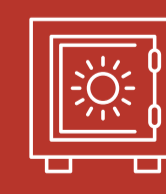


Italian Beds

*Optional double plus single,  
or 3 single beds*



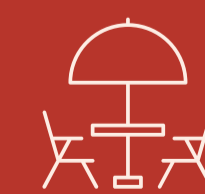
Private  
bathroom



Safe box



Heating



Terrace



Paine Massif  
view

Puma  
Sector



Italian Beds  
*(Double and twin option  
90x200 cm or 180x200 cm)*



Private  
bathroom



Safe  
box



Heating



Terrace



*- Standard rooms with view of Mount Balmaceda  
They are located outside the hotel and are connected to the main shed by  
a wooden walkway, considered as independent modules.*

*- 06 double rooms, Italian beds which can be with 1 Queen bed or 2 single  
beds. Measurements: 18m<sup>2</sup> each*



# Cuisine

Our chef specializes in serving Fueguine cuisine made with locally sourced ingredients, including lamb, guanaco, octopus, and a variety of seafood. The menu changes based on seasonal availability of ingredients, with at least part of the menu changing daily. We also prioritize accommodating dietary

restrictions of our guests, offering various menu options such as vegan, vegetarian, pescetarian, and gluten-free. The hotel grows many herbs on-site and serves them fresh, allowing our chef to showcase her creativity and ideas.



## Terms & Conditions

- To guarantee the reservation, **payment of 30% of the total amount is required.**
- For individual reservations, **the remaining balance must be paid in full at least 30 days prior to arrival date.**
- **For group reservations,** the remaining balance must be paid in full at least 45 days prior to arrival date.
- All reservations must be requested in writing and will be confirmed by the same means.
- Any reservation that does not meet these requirements may be cancelled without prior notice.

## Cancellation Policies

- **30 days prior to arrival:**  
No penalty and 100% refund of the reservation.(in case of prepayment).
- **From 29 to 15 days prior to arrival:**Penalty of 30% of the total reservation.
- **From 14 to 0 days prior to arrival:** Penalty of 100% of the total reservation.

**Note: Cancellation policies are only valid for individual reservations, for group reservations please consult with your executive.**



reservas@kaupatagonia.com



+56 9 3786 7054